



Yealmpton Primary School

www.yealmpton-primary.devon.sch.uk

A partner school in the Westcountry Schools Trust (WeST)
Friday 6th November 2020



WESTCOUNTRY
SCHOOLS TRUST

Welcome Back - Autumn Term 2

A big welcome back to all our families. We would like to take this opportunity to say how very proud we are of all the children and how well they have settled back into their learning with positive attitudes and enthusiasm towards the recovery curriculum in place. Thank you also to our wonderful team at Yealmpton for their hard work and dedication in ensuring the safety of the children.

Parents Evening Consultations

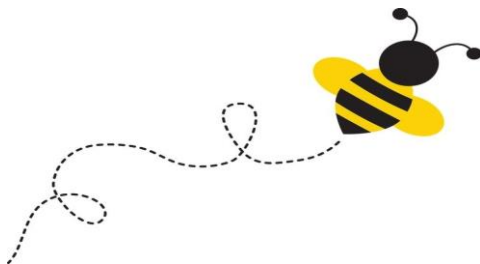
Wednesday 25th November & Monday 30th November

Over the last half term, our teachers have been getting to know your children, building relationships and laying the foundations for some critical catch up learning. We recognise how important it is to share how your child has settled into school and inform you of their progress and attainment. Unfortunately, due to the current circumstances with social-distancing, we are not able to meet face to face this year however, we will email you a baseline report and are offering telephone consultations with your child's class teacher on the dates mentioned above. There will be 10-minute time slots available ranging from 3.30-6.30pm, dependent on the number of children per class. As in previous years, you will need to book your parent/teacher consultation via our Parents Evening system that will go live on Monday 16th November. You will receive an email with a link to enable you to access the site and book your chosen time slot. We would advise that you book as soon as possible to enable you to secure a suitable time as appointments can get booked up quickly. If you have any queries, please do not hesitate to contact the school office.

DFE Online Platform - MS Teams

We know that many of you would like to know more about how you can support your child's remote learning and we are therefore pleased to announce that we will be introducing the DFE Online Platform using Microsoft Teams. To enable us to set up Microsoft Teams safely and responsibly, we require parents and carers to support us in ensuring their child remains safe whilst using Microsoft Teams for remote learning at home. We would therefore appreciate it if you could complete our Microsoft Teams Parental Agreement Form by following the instructions in the letter attached alongside this Newsletter. The deadline for completion of the form is 12pm on Wednesday 11th November 2020.

Many thanks.



FYVS - Friends of Yealmpton Village School

We have just taken delivery of a huge selection of toys for the younger children to explore and play with both indoors and out. Thank you so much to FYVS for providing continuous support in enriching the learning and opportunities for all the children.

COVID 19

Following the start of the second national lockdown on Thursday 5th November, we have been reviewing our school health and safety procedures to ensure that we are following all national guidance. If the need should arise that we have to close a class bubble, we will let you know as soon as possible.

In accordance with national guidance children are being referred for a Covid-19 test if they are displaying symptoms. If your child has been in close contact with a confirmed case, they will be asked to self-isolate at home. Please DO NOT try to get your child tested unless they have developed the symptoms of Covid-19. A negative test result does not mean that they can go back to school; it simply means that they had not fully developed the illness at the time of the test and they could develop the illness at any point in the 14 days.

Social distancing

We need your support to maintain the best social distancing while waiting for your children at the end of the school day and request that the school entrance is clear to allow children enough space to vacate the premises. If you can leave the school site straight after collection this helps reduce the numbers of people on site at any time and avoids congested areas. We are hopeful that Year 3 collecting from the community car park will help free up more space.

Early Years Tours (Reception Children 2021)

Do you have a child due to start school in September 2021 or know of family or friends who do? Due to COVID-19 we are not able to welcome visitors to the school so we are busy preparing a warm welcome to prospective parents by showcasing the school with a virtual tour which will be posted on the school website on Monday 16th November.

I appreciate this is an anxious time and I hope I can offer you some reassurance by knowing that we will continue to do all that we can to keep everyone safe by following the rigid health and safety procedures in place. We will get through this together!

Best wishes

Louise Young

Head teacher

